

2018 KS2 School Dashboard for governors & school leaders

Produce custom dashboards at
www.fftaspire.org

Grayrigg CofE School

LA Cumbria DfE 9093361 Produced September 2018 Version 1

What it is

Seven easy-to-use reports which help governors and school leaders to evaluate school performance using the latest 2017 DfE school performance indicators.

What it tells you

- What are the strengths and areas for improvement in your school?
- How does attainment and pupil progress compare to the national average?
- How are you performing in different subjects?
- Do you have any under-performing groups of pupils?
- How might the context of your school affect performance?
- How does pupil attendance compare to the national average?

About the data shown

1 2 3

Actual results

Actual results for your school, using a range of measures such as averages and thresholds.



Gauges

These display headline indicators and whether actual results and pupils' progress are in line with, or significantly above or below, the national average.

ESTIMATED



1 2 3

Pupil progress

The value added progress that your pupils have made from one key stage to the next. FFT compares your actual results to the estimated results based on the progress of similar pupils nationally.



Statistical significance

Green plus signs and red minus signs highlight where either actual results or pupils' progress is significantly above or below the national average.



Trends

The dashboard analyses school performance over 3-5 years. Any significant year-on-year improvement is highlighted using an up arrow. Significant declines in performance are highlighted with a down arrow.



Strengths & weaknesses

These highlight key pupil groups and subjects where progress is above or below the national average.

Working in partnership with



Data sources

Generated from FFT Aspire which includes data sourced from the DfE (National Pupil Database) and data calculated by FFT. FFT is accredited as a DfE supplier to receive early access to ASP data. Headline performance indicators will be consistent with the DfE School Performance Tables and ASP.

Overview

KS2 Attainment 2018 · Actual results

5 pupils

KS2 Progress 2018 · Value Added

5 matched pupils

Average Scaled Score (Re, Ma)

% Expected standard+ (Re, Wr, Ma)

Average Scaled Score (Re, Ma)

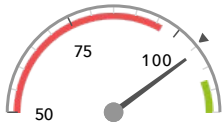
% Expected standard+ (Re, Wr, Ma)

105.9

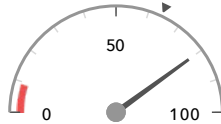
80%

-0.6

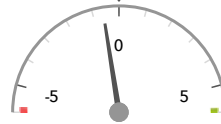
+4%



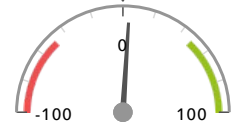
In line with the national average (104.7) ◀



In line with the national average (64%) ◀



In line with the national average (0) ◀



In line with the national average (0%) ◀

KS2 higher and lower performing pupil groups 2018

	Higher performing	Lower performing
Overall achievement pupil progress		First language English (5) Not FSM (5) Not FSM (ever) (5)
KS2 reading achievement pupil progress	First language English (5) Not FSM (5) Not FSM (ever) (5)	
KS2 writing achievement pupil progress	First language English (5) Not FSM (5) Not FSM (ever) (5)	
KS2 mathematics achievement pupil progress		First language English (5) Not FSM (5) Not FSM (ever) (5)
KS2 grammar, punctuation & spelling achievement pupil progress	First language English (5) ↑ Not FSM (5) ↑ Not FSM (ever) (5) ↑	

Attainment & progress

KS2 Attainment 2018

5 pupils

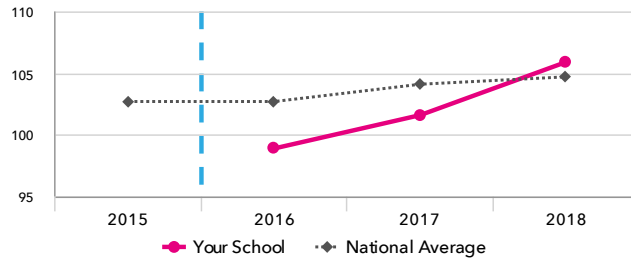
Average Scaled Score (Re, Ma)

105.9

FFT Rank



In line with the national average (104.7)



KS2 Progress 2018

5 matched pupils

Average Scaled Score (Re, Ma)

-0.6

FFT Rank



In line with the national average (0)

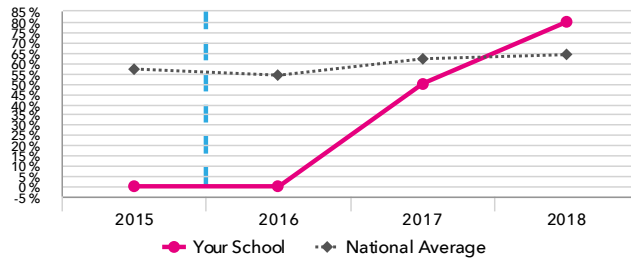
% Expected standard+ (Re, Wr, Ma)

80%

FFT Rank



In line with the national average (64%)



% Expected standard+ (Re, Wr, Ma)

+4%

FFT Rank



In line with the national average (0%)

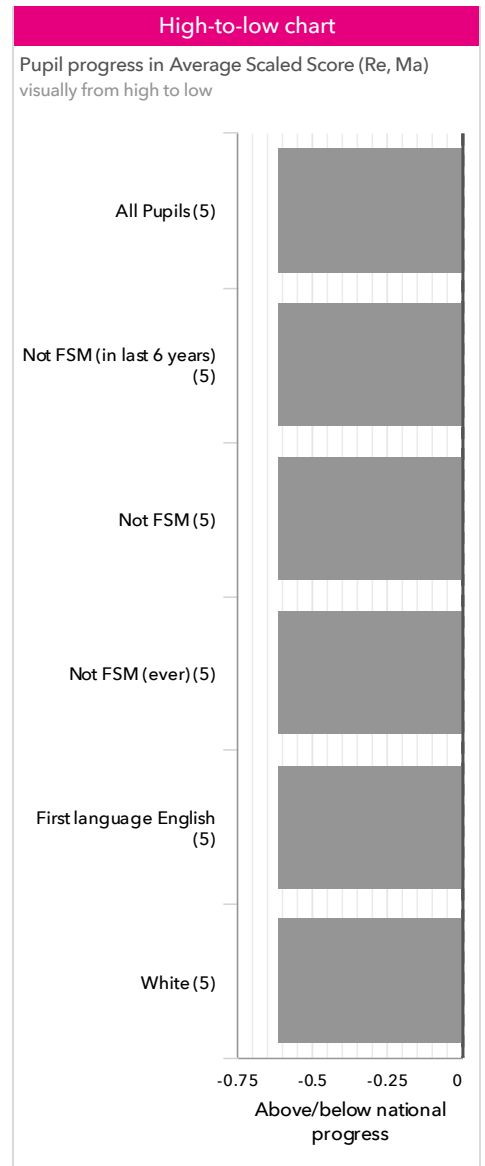
KS2 performance summary

	Actual results			Pupil progress		
	2016	2017	2018	2016	2017	2018
Number of Pupils / % Matched	4	8	5	100%	88%	100%
% Expected standard+ (Re, Wr, Ma)	0%	50%	80%	-42%	-14%	+4%
% Higher standard (Re, Wr, Ma)	0%	0%	0%	-0%	-10%	-17%
Average Scaled Score (Re, GPS, Ma)	98.4	101.6	106.3	-2.9	-3.5	-0.6
Average Scaled Score (Re, Ma)	98.9	101.6	105.9	-2.0	-3.0	-0.6
% Expected standard+ Reading	50%	75%	80%	-8%	+4%	-5%
% Higher standard Reading	0%	38%	40%	-6%	+16%	+2%
Scaled Score Reading	99.8	103.3	108.6	-0.8	-0.7	+1.8
% Expected standard+ Writing	50%	75%	100%	-25%	-3%	+11%
% Higher standard Writing	0%	13%	40%	-4%	-5%	+11%
Scaled Score Writing	94.0	98.3	107.0	-6.4	-2.3	+2.6
% Expected standard+ Maths	50%	63%	100%	-15%	-25%	+14%
% Higher standard Maths	0%	13%	0%	-4%	-10%	-33%
Scaled Score Maths	98.0	100.0	103.2	-3.2	-5.2	-3.0
% Expected standard+ Grammar, Punctuation & Spelling	25%	75%	100%	-42%	-3%	+12%
% Higher standard Grammar, Punctuation & Spelling	0%	13%	40%	-6%	-19%	-5%
Scaled Score Grammar, Punctuation & Spelling	97.8	103.0	110.0 ↑	-4.5	-2.9	+1.8 ↑
% Expected standard+ Science	75%	75%	100%	-	-	-
Average Point Score (Re, Wr, Ma)	-	-	-	-	-	-
% Level 4+ (Re, Wr, Ma)	-	-	-	-	-	-
% Level 4B+ (Re, Wr, Ma)	-	-	-	-	-	-
% Level 5+ (Re, Wr, Ma)	-	-	-	-	-	-

Pupil groups

KS2 Pupil groups performance 2018

		Pupils	Actual results			Pupil progress		
			Average Scaled Score (Re, Ma)	% Expected standard + (Re, Wr, Ma)	% Higher standard (Re, Wr, Ma)	Average Scaled Score (Re, Ma)	% Expected standard + (Re, Wr, Ma)	% Higher standard (Re, Wr, Ma)
Summary	All Pupils >	5	105.9	80%	0%	-0.6	+4%	-17%
Gender	Male >	2	106.8	100%	0%	+0.2	+23%	-12%
	Female >	3	105.3	67%	0%	-1.1	-10%	-20%
Prior Attainment	Higher attainers >	2	110.3	100%	0%	-1.1	+2%	-38%
	Middle attainers >	2	104.8	100%	0%	+0.1	+28%	-3%
	Lower attainers >	1	99.5	0%	0%	-1.0	-44%	-0%
Pupil Premium	Not FSM (in last 6 years) >	5	105.9	80%	0%	-0.6	+4%	-17%
FSM	Not FSM >	5	105.9	80%	0%	-0.6	+4%	-17%
FSM Ever	Not FSM (ever) >	5	105.9	80%	0%	-0.6	+4%	-17%
Term of Birth	Autumn Term >	2	106.5	100%	0%	-2.1	+8%	-15%
	Summer Term >	3	105.5	67%	0%	+0.4	+0%	-18%
SEN Group	SEN Support >	1	99.5	0%	0%	-1.0	-44%	-0%
	No SEN >	4	107.5	100%	0%	-0.5	+15%	-21%
EAL	First language English >	5	105.9	80%	0%	-0.6	+4%	-17%
Mobility	Joined in Y5 or Y6 >	1	112.0	100%	0%	-0.2	+1%	-52%
	Joined before Y5 >	4	104.4	75%	0%	-0.7	+4%	-8%
Ethnicity	White >	5	105.9	80%	0%	-0.6	+4%	-17%



Subjects

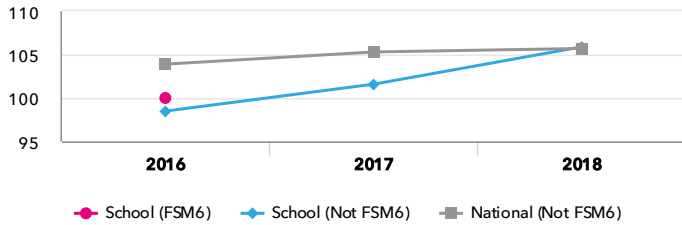
KS2 subject performance 2018

	Actual results			Pupil progress			Actual results over time		
	2016	2017	2018	2016	2017	2018			
Number of Pupils / % Matched	4	8	5	100%	88%	100%			
Reading									
% Expected standard+	50%	75%	80%	-8%	+4%	-5%			
% Higher standard	0%	38%	40%	-6%	+16%	+2%			
Scaled Score	100	103	109	-0.8	-0.7	+1.8			
Level 4+	-	-	-	-	-	-			
Level 4B+	-	-	-	-	-	-			
Level 5+	-	-	-	-	-	-			
Average Point Score	-	-	-	-	-	-			
Writing									
% Expected standard+	50%	75%	100%	-25%	-3%	+11%			
% Higher standard	0%	13%	40%	-4%	-5%	+11%			
Scaled Score	94	98	107	-6.4	-2.3	+2.6			
Level 4+	-	-	-	-	-	-			
Level 5+	-	-	-	-	-	-			
Average Point Score	-	-	-	-	-	-			
Maths									
% Expected standard+	50%	63%	100%	-15%	-25%	+14%			
% Higher standard	0%	13%	0%	-4%	-10%	-33%			
Scaled Score	98	100	103	-3.2	-5.2	-3.0			
Level 4+	-	-	-	-	-	-			
Level 4B+	-	-	-	-	-	-			
Level 5+	-	-	-	-	-	-			
Average Point Score	-	-	-	-	-	-			
Grammar, Punctuation & Spelling									
% Expected standard+	25%	75%	100%	-42%	-3%	+12%			
% Higher standard	0%	13%	40%	-6%	-19%	-5%			
Scaled Score	98	103	110 ↑	-4.5	-2.9	+1.8 ↑			
Science									
% Expected standard+	75%	75%	100%	-	-	-			
Level 4+	-	-	-	-	-	-			
Level 5+	-	-	-	-	-	-			
Average Point Score	-	-	-	-	-	-			

Disadvantaged pupils

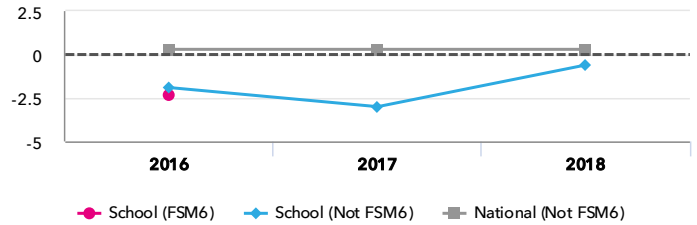
KS2 attainment for disadvantaged pupils 2018

Average Scaled Score (Re, Ma)



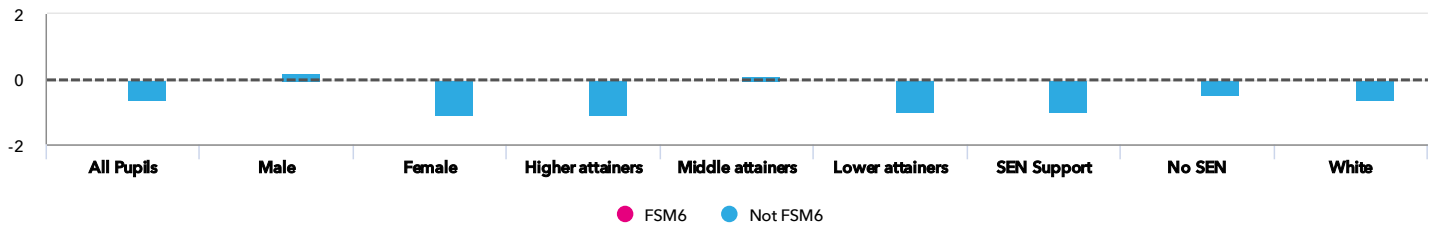
KS2 progress for disadvantaged pupils 2018

Average Scaled Score (Re, Ma)



Progress gap

Average Scaled Score (Re, Ma)

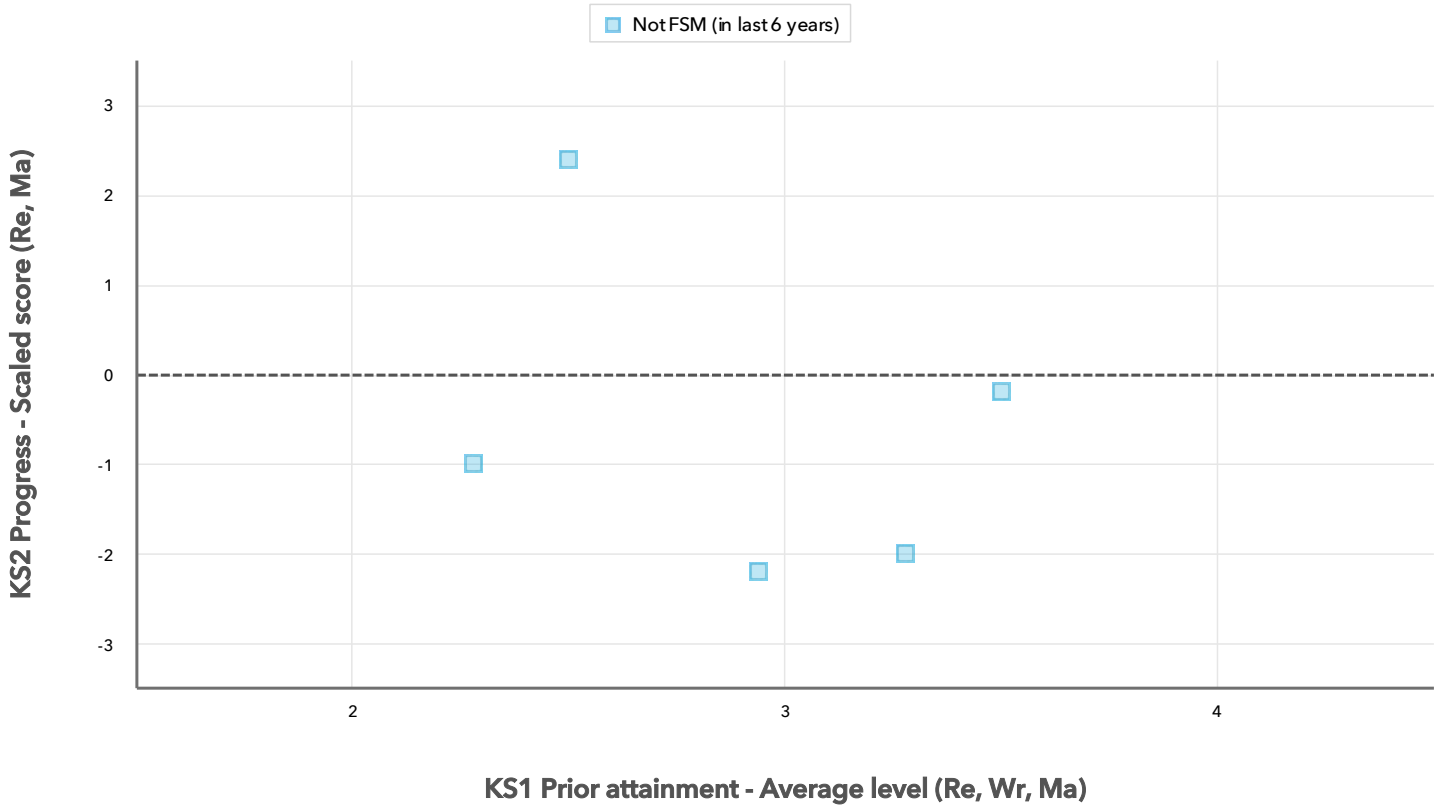


Attainment & progress

Pupils		Attainment			Progress				
		Average Scaled Score (Re, Ma)			Average Scaled Score (Re, Ma)				
		FSM6	Not FSM6	Gap	FSM6	Not FSM6	Gap		
Summary	All Pupils	-	5	-	105.9	-	-	-0.6	-
Gender	Male	-	2	-	106.8	-	-	0.2	-
	Female	-	3	-	105.3	-	-	-1.1	-
Prior Attainment	Higher attainers	-	2	-	110.3	-	-	-1.1	-
	Middle attainers	-	2	-	104.8	-	-	0.1	-
	Lower attainers	-	1	-	99.5	-	-	-1	-
SEN Group	SEN Support	-	1	-	99.5	-	-	-1	-
	No SEN	-	4	-	107.5	-	-	-0.5	-
Ethnic Group	White	-	5	-	105.9	-	-	-0.6	-

Scatterplot

KS2 Pupil scatterplot 2018 5 pupils highlighted by Pupil Premium



Context

Context · Year 6 · 2017 / 2018

		Pupils	Proportion	
			School	National
Summary	All Pupils	5	100%	100%
Gender	Male	2	40%	51%
	Female	3	60%	49%
Prior Attainment	Higher attainers	2	40%	31%
	Middle attainers	2	40%	35%
	Lower attainers	1	20%	29%
Pupil Premium	Not FSM (in last 6 years)	5	100%	69%
FSM	Not FSM	5	100%	85%
FSM Ever	Not FSM (ever)	5	100%	69%
Term of Birth	Autumn Term	2	40%	33%
	Summer Term	3	60%	35%
SEN Group	SEN Support	1	20%	15%
	No SEN	4	80%	82%
EAL	First language English	5	100%	80%
Mobility	Joined in Y5 or Y6	1	20%	7%
	Joined before Y5	4	80%	93%
Ethnicity	White	5	100%	74%

Absence · Year 6 · 2017 / 2018

		Pupils	Absence		Persistent absentees	
			School	National	School	National
Summary	All Pupils	5	3%	4%	0%	5%
Gender	Male	2	3%	4%	0%	6%
	Female	3	4%	4%	0%	5%
Prior Attainment	Higher attainers	2	3%	3%	0%	2%
	Middle attainers	2	3%	4%	0%	4%
	Lower attainers	1	3%	5%	0%	10%
Pupil Premium	Not FSM (in last 6 years)	5	3%	3%	0%	3%
FSM	Not FSM	5	3%	4%	0%	4%
FSM Ever	Not FSM (ever)	5	3%	3%	0%	3%
Term of Birth	Autumn Term	2	6%	4%	0%	6%
	Summer Term	3	2%	4%	0%	5%
SEN Group	SEN Support	1	3%	5%	0%	10%
	No SEN	4	3%	4%	0%	4%
EAL	First language English	5	3%	4%	0%	6%
Mobility	Joined in Y5 or Y6	1	2%	6%	0%	15%
	Joined before Y5	4	4%	4%	0%	5%
Ethnicity	White	5	3%	4%	0%	6%